

PART OF S.W. 1/4 OF
SECTION 8, T.6N., R.1W., S.L.B.&M.

TAXING UNIT: 25

IN OGDEN CITY

PREFIX: 11-042

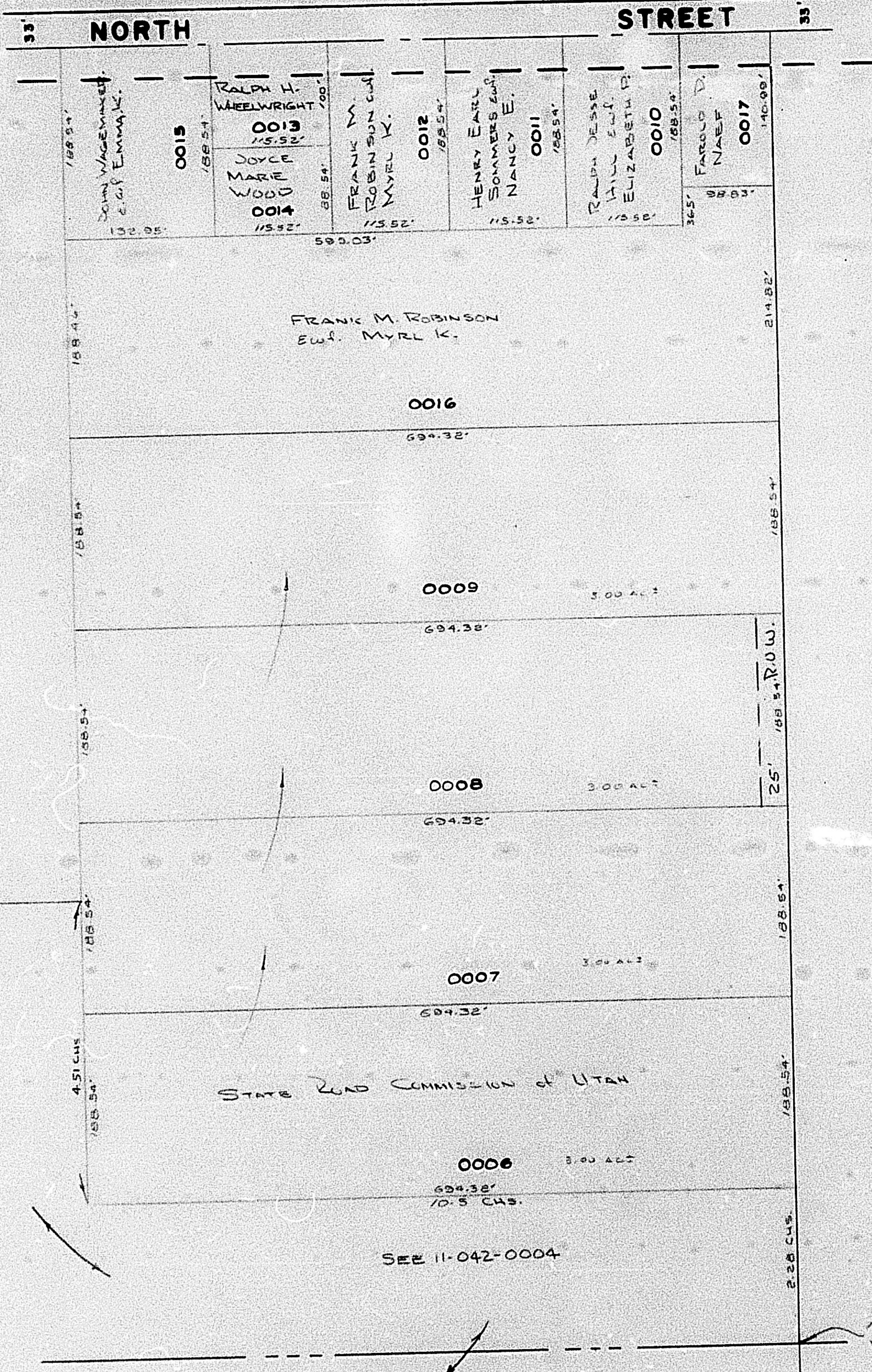
SCALE 1" = 100'

ALSO SEE PAGES 42-2,3

SEE P. 42-3

NOTE: S. 1/2 OF ST. NOT OPEN

HARRISVILLE TOWN LIMITS



PARCEL NO.
 0005 TO 0017

SEE P. 42-2

SEE P. 43

SEE BOOK 12 PAGE 75-1